

# NARSF106

3PC内螺纹经济型球阀  
3PC Ball Valve Light Type 1000WOG

Threaded Ball Valves

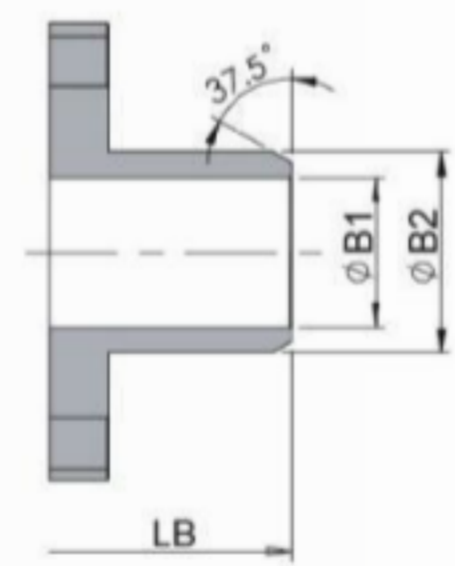
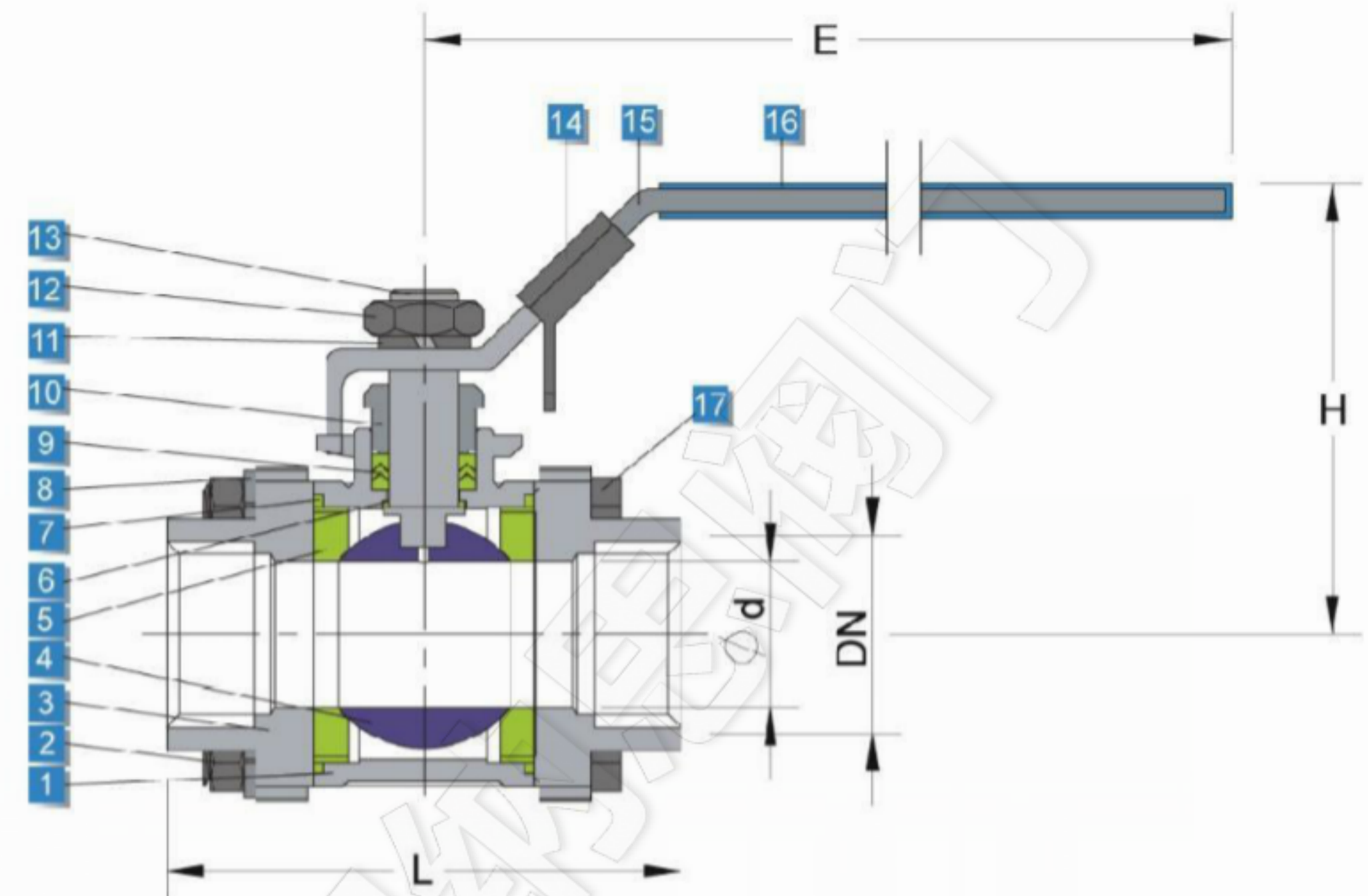
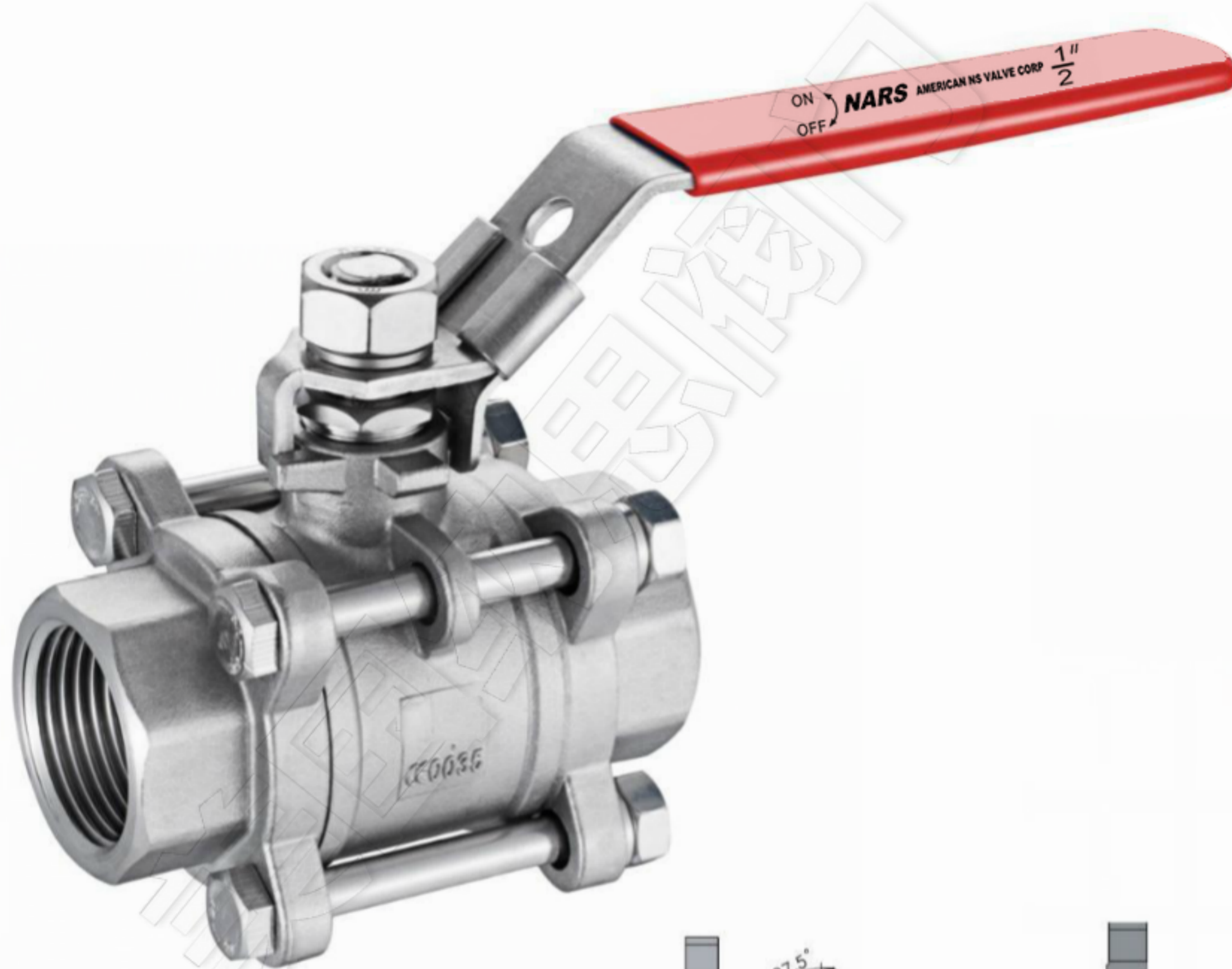
## 产品特点 / FEATURES:

阀杆带有防脱出装置设计 Blow-out Proof Stem  
钢球球槽上有泄压孔设计 Pressure Balance Hole In Ball Slot  
可选择挂锁装置 Lock Device  
采用脱腊精密铸造 Using Dewaxing Precision Casting

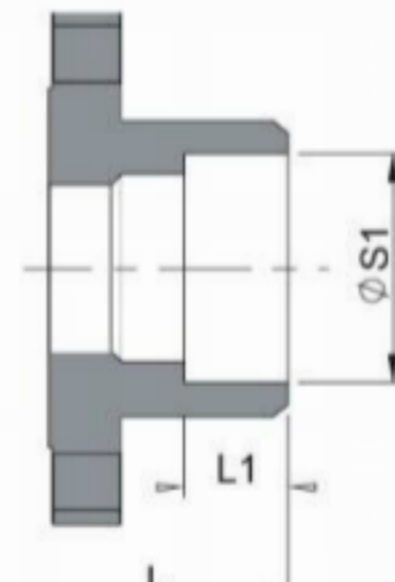
## 标准 / STANDARDS:

设计标准 / Design: ASME B16.34  
壁厚标准 / Wall Thickness: ASME B16.34  
螺纹标准 / Pipe Thread: ASME B1.20.1, BS21  
DIN 2999/259, ISO 228/1 JIS B 0203, ISO 7/1  
对焊标准 / Butt Weld: ASME B16.25  
承插焊标准 / Socket Weld: ASME B16.11  
检测标准 / Inspection & Testing: MSS SP-110, EN 12266

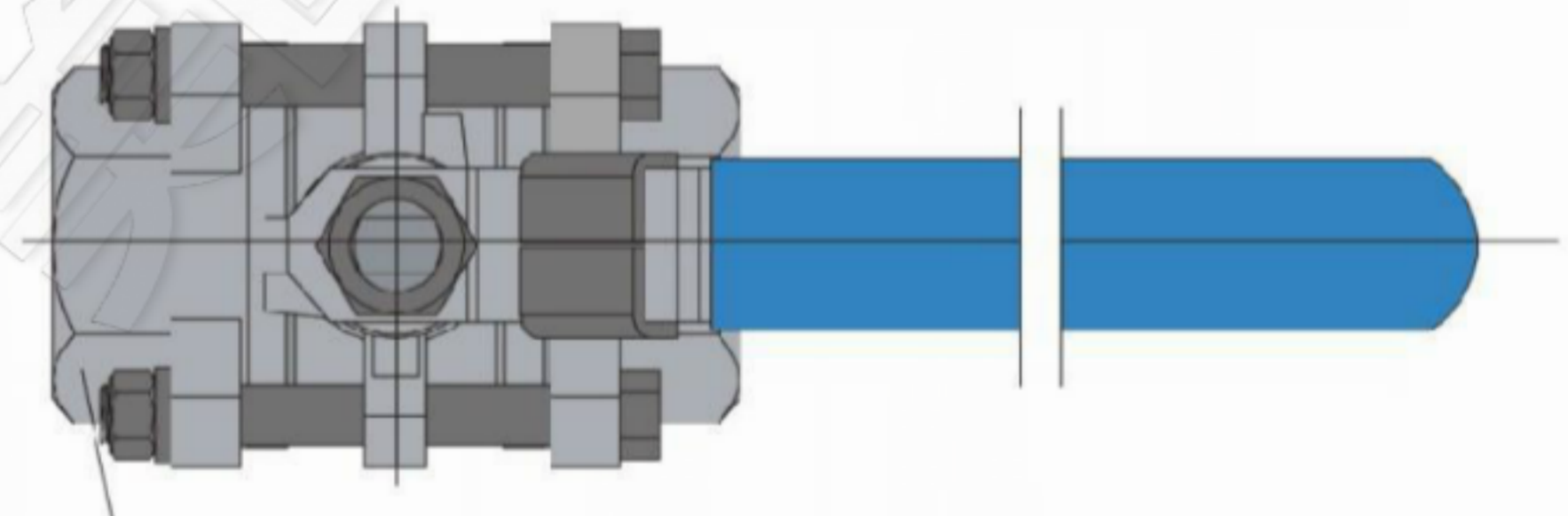
No.	PARTS NAME	MATERIAL		
1	阀体/Body	CF8M	CF8	WCB
2	螺母/Nut		SUS304	
3	阀盖/Cap	CF8M	CF8	WCB
4	球体/Ball	CF8M	CF8	
5	阀座/Seat	PTFE	RPTFE	
6	止推垫片/Thrust Washer		PTFE	
7	密封圈/Cap Gasket		PTFE	
8	弹簧垫圈/Spring Washer		SUS304	
9	填料/Stem Packing		PTFE	
10	填料压盖/Nut Gland		SUS304	
11	弹簧垫圈/Spring Washer		SUS304	
12	螺母/Nut		SUS304	
13	阀杆/Stem	SUS316	SUS304	
14	锁片/Locking Device		SUS301	
15	手柄/Handle		SUS304	
16	手柄套/Handle Cover		Plastic	
17	双头螺栓/Bolt		SUS304	



Butt Welding End



Socket End



HEX.B

Unit:mm

DN	L	Ød	H	E	L1	ØS1	LB	ØB1	ØB2	HEX.B	THREAD
1/2"	60	15	59	98	10	21.8	60	15	22	25	NPT BSP PT DIN BSPT etc.
3/4"	70	20	67	120	13	27.3	70	20	26	30.5	
1"	80	24	70	120	13	34	80	24	34	39	
1-1/4"	92	31.5	80.5	150	16	42.8	92	31.5	42	47	
1-1/2"	107	38	94	170	16	48.9	107	38	47	54	
2"	125	48	102	170	17	61.4	125	48	60	66.5	
2-1/2"	160	64	125	250	17	74	160	64	75	81.5	
3"	180	76	135.5	250	17	90	180	76	90	97	
4"	225	98	165.5	300	20	115.4	225	98	110	124	